



IRI's state-of-the-art metal recovery system and facility

Integrated Recycling Industries (IRI) specializes in solid waste recycling and reclamation services. Since 2001, it has been servicing the waste disposal requirements of the electronics and semiconductor industries.

Rapid expansion, investments in advanced technology and state-of-the-art facilities, well-trained personnel – all these are proof of IRI's unrelenting pursuit of excellence and customer satisfaction. Its world class standards are supported by ISO 9001:2000 and ISO 14001 certifications. It has all the permits and licenses required to ensure environmental protection.

In a short period, IRI has realized its dream of becoming a total waste management company. Behind IRI's drive is its commitment to environmental protection and conservation.

Fully Integrated Recycling Company

IRI prides itself in being the first fully integrated waste recycling facility in the Philippines. In 2004, it invested US\$2.5 million in a state-of-the-art metal recovery system and facility, the first in the country. With this facility, IRI is able to treat scrap materials, recover metal, and export the resulting non-hazardous raw by-products.

The IRI facility



- Has a capacity to recycle and treat 400 tons of waste materials monthly, such as printed wiring boards, solder dross and paste, and plastic packaging materials;



- Is specifically designed to comply with Philippine environmental laws and standards, e.g., compliance with clean air act provisions; and



- Uses chemical separation and cutting-edge scientific extraction methods such as electrolysis and non-burn treatment process.

With its state-of-the-art equipment and advanced technology in place, IRI is now able to offer its clients fully integrated recycling and reclamation services.



Services

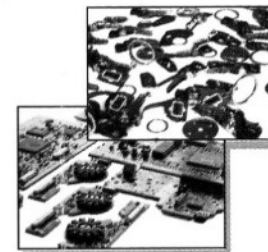
IRI reclaims:

- **Non-ferrous metals** such as copper, nickel, tin, aluminum, and metal alloy from electronic wastes such as:

- * CU end rails
- * Alloy 42 frames
- * TR dummies
- * CU chips
- * IC dummies
- * Rejected Al parts
- * Wires and cables



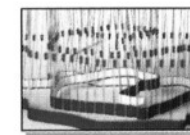
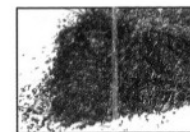
- **Precious metals** such as gold, silver, and palladium from:



- * CPGA
- * AU trimmings
- * AU pins
- * SOT
- * Module units
- * FPGA
- * PWB with components

recycles:

- **Plastic wastes** such as crushed plastic compound, plastic reels, wafer jars/boats, purged plastic, plastic parts/casings, and IC tubes and trays



and provides:

- **Crushing services** for reject units for protection of intellectual property rights and
- **Environmental consulting services** to client companies.